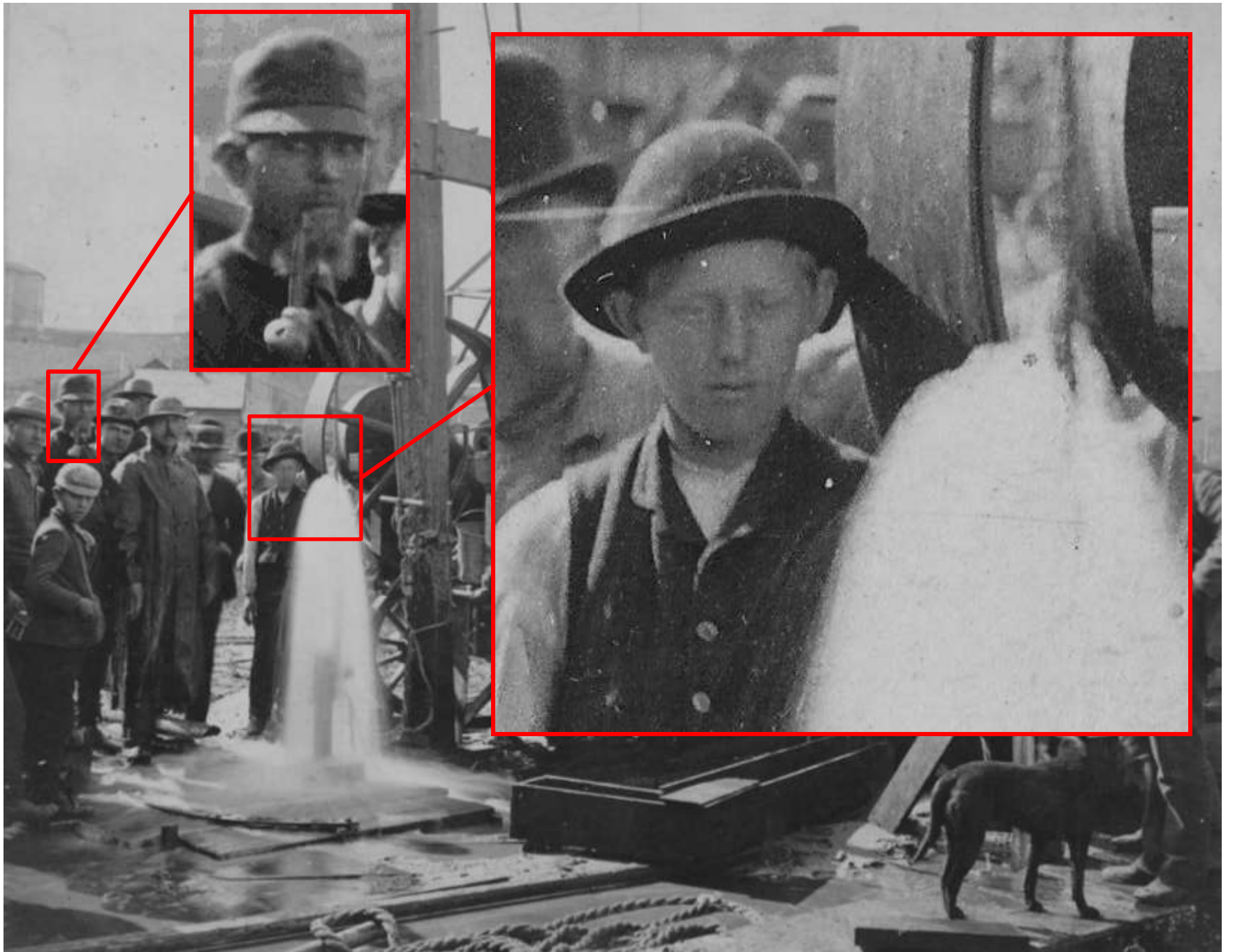
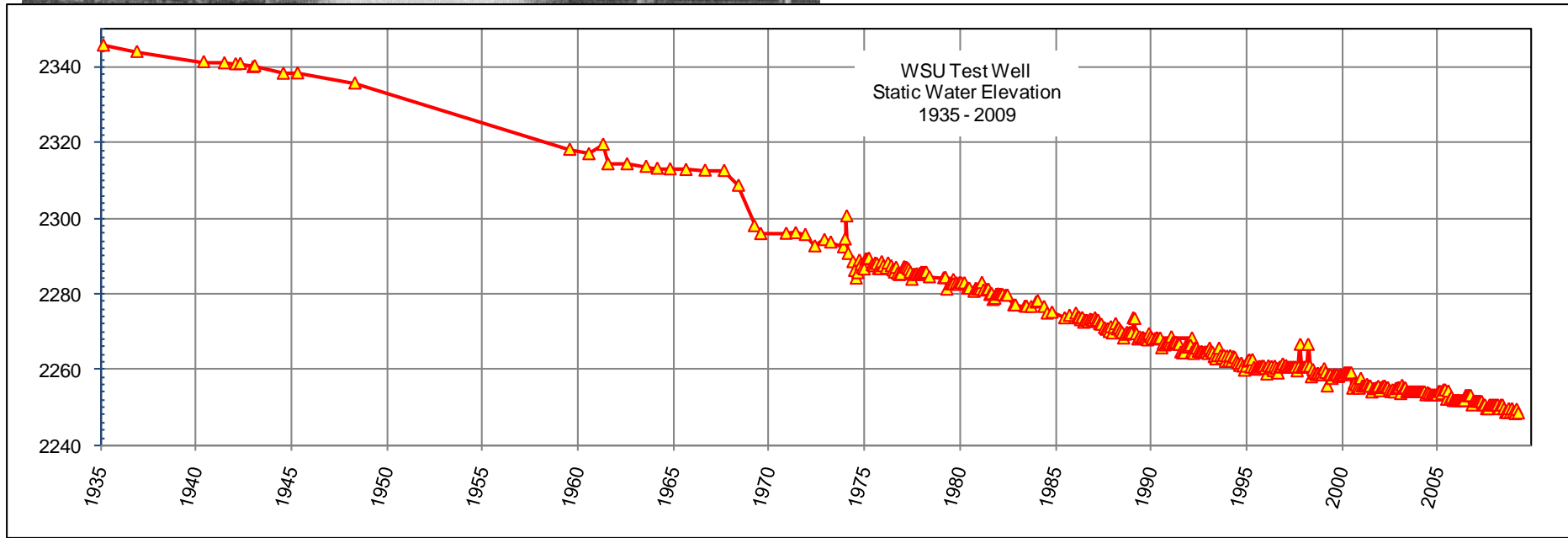


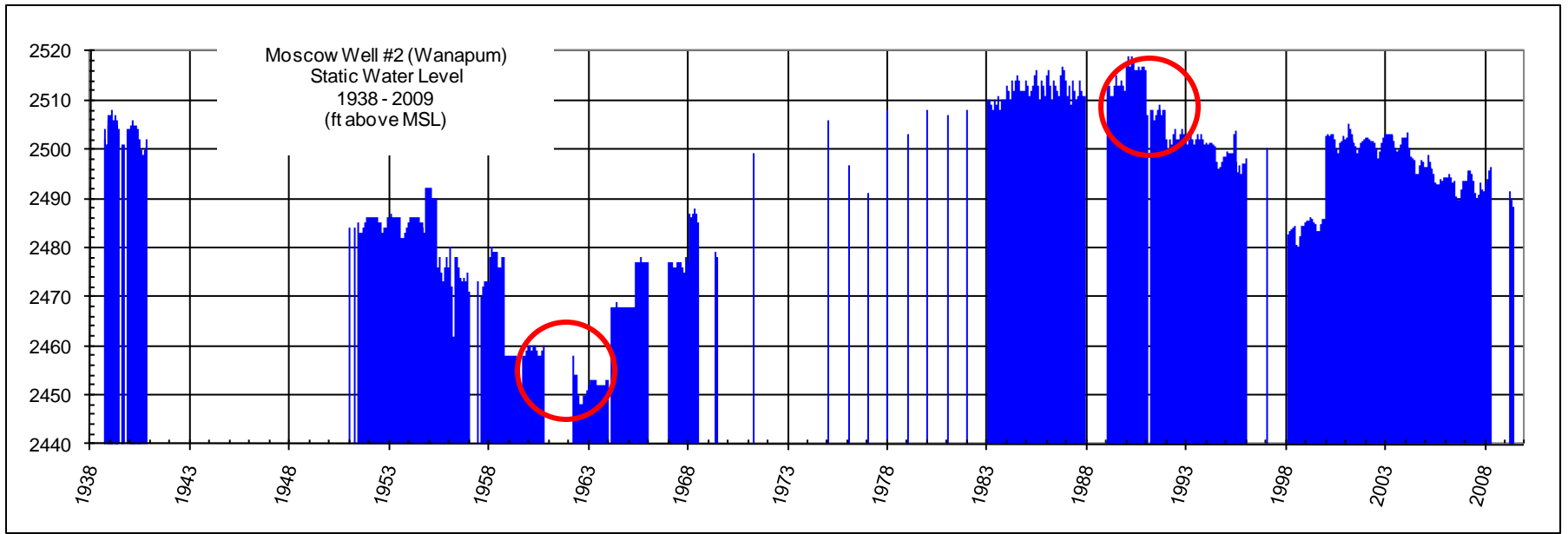
2009 Palouse Basin Water Summit
October 6, 2009

PBAC Update
Steve Robischon



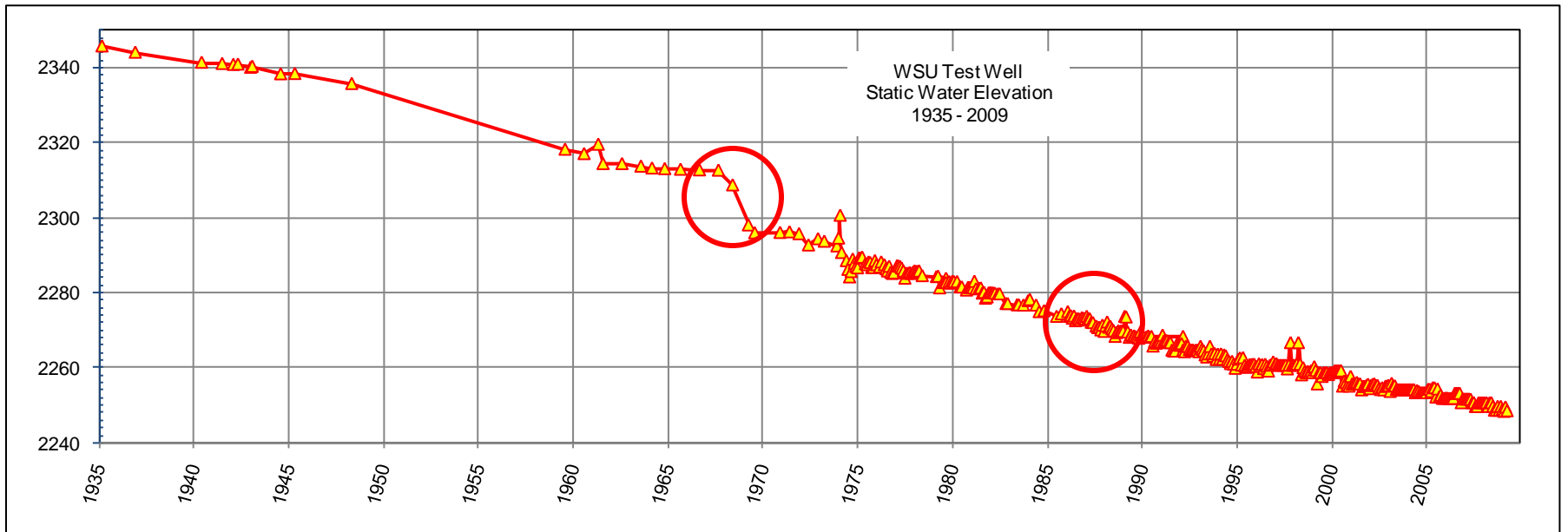




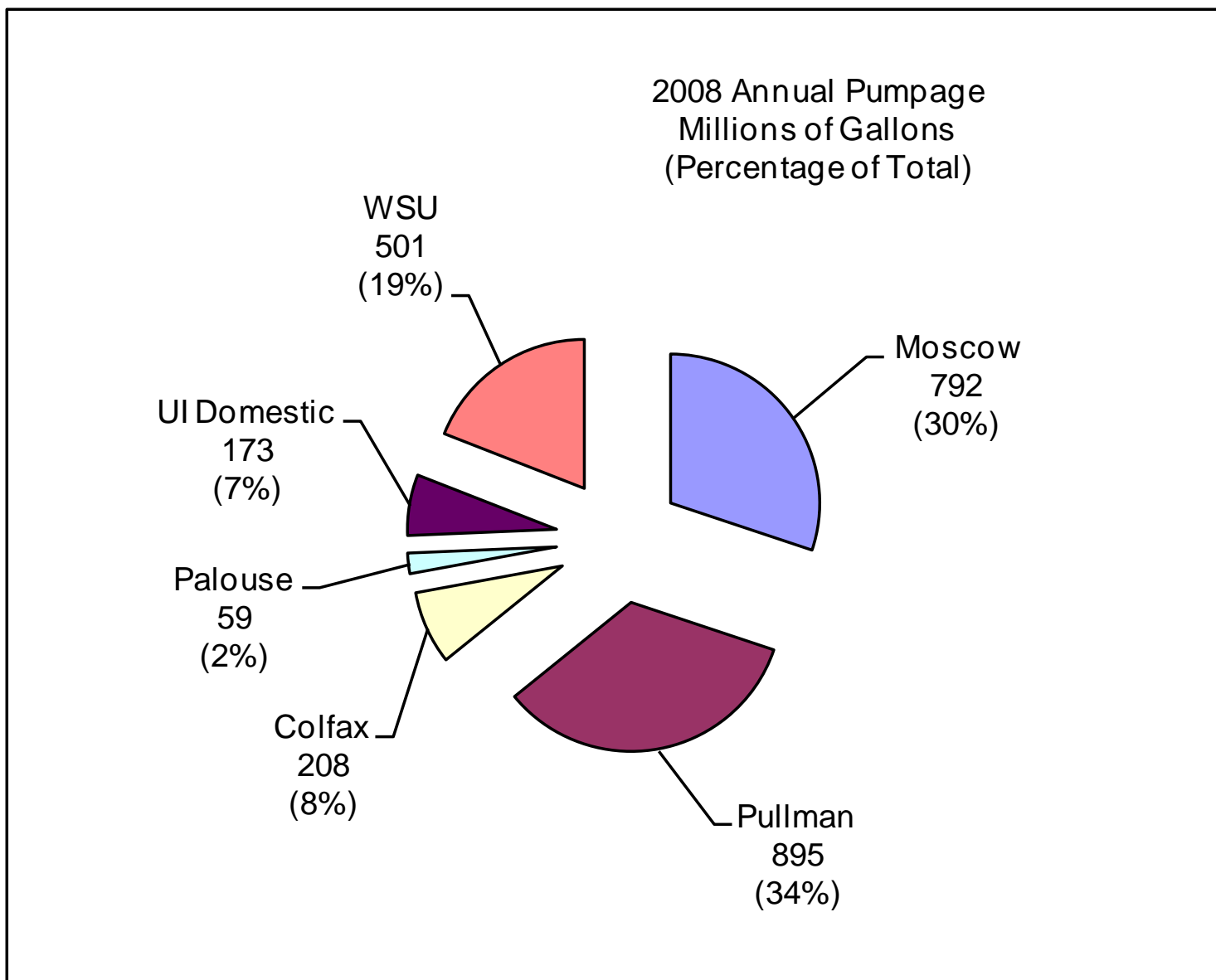


1967 - PMWRC

1992 - GWMP



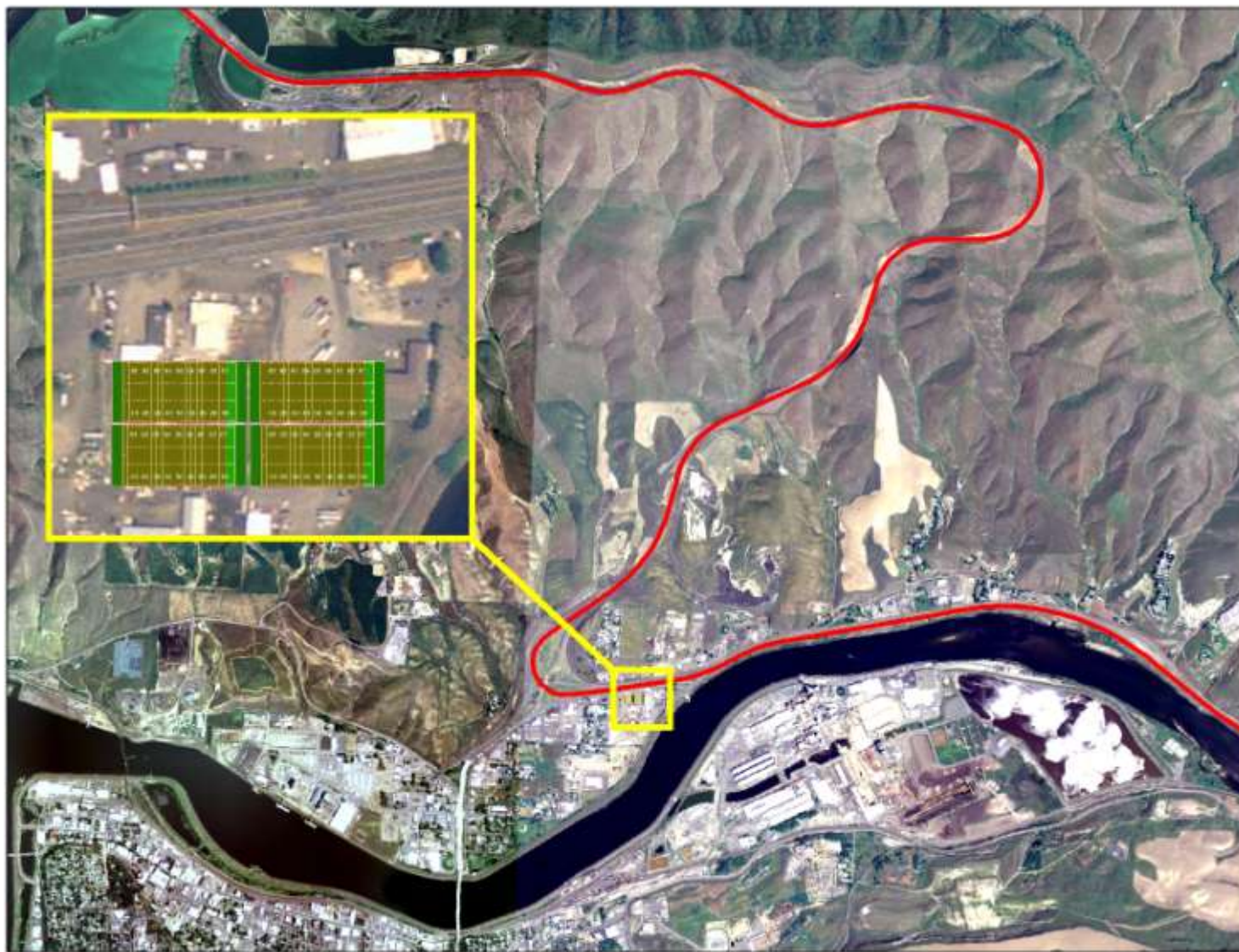
2008 Pumping Total – 2.63 Billion Gallons



2008 Pumping Total – 2.63 Billion Gallons



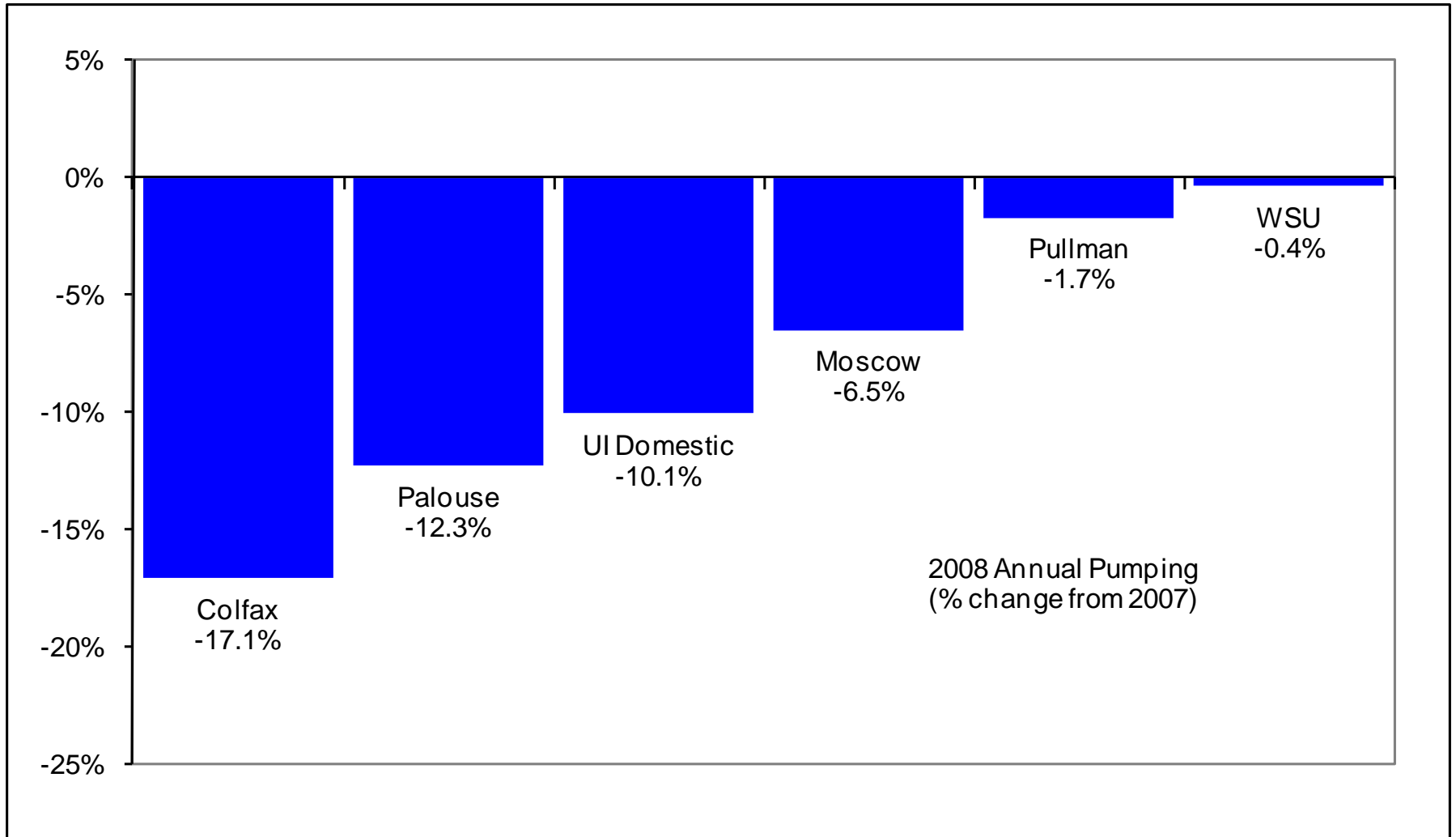
2008 Pumping Total – 2.63 Billion Gallons



2008 Pumping Total – 2.63 Billion Gallons

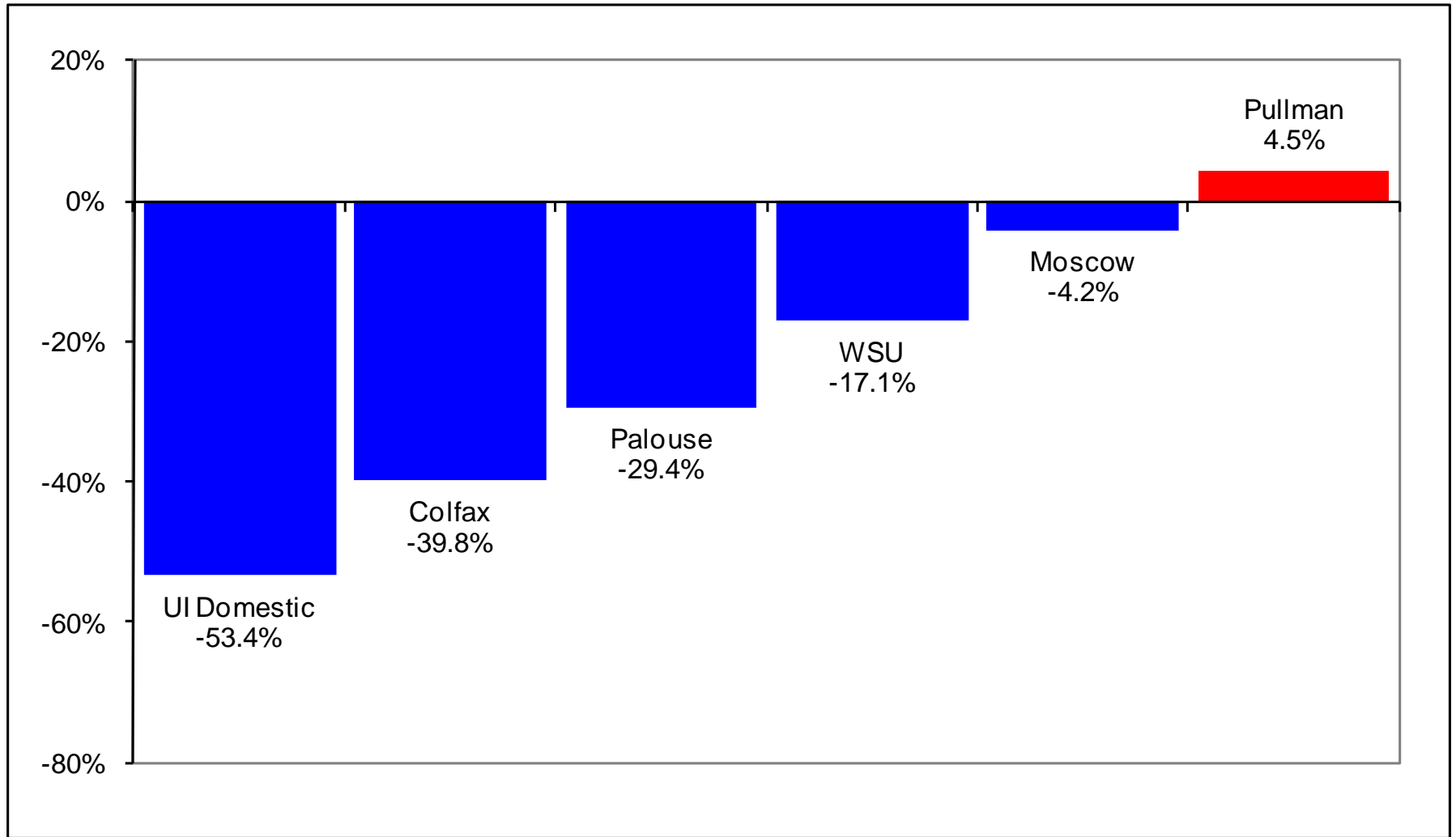


2008 Pumping – Comparison to 2007



Aggregate Total down 5.2% from 2007

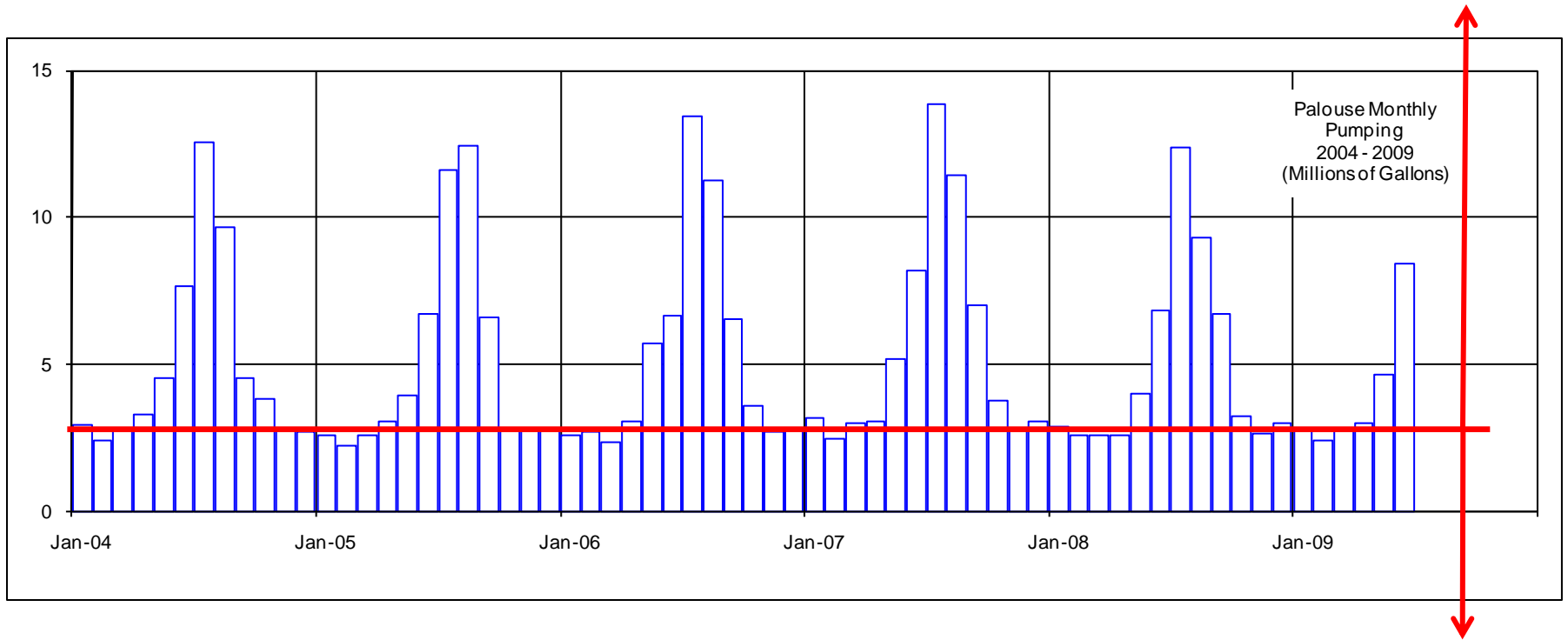
2008 Pumping – Comparison to 1992



Aggregate Total down 14.9% from 1992

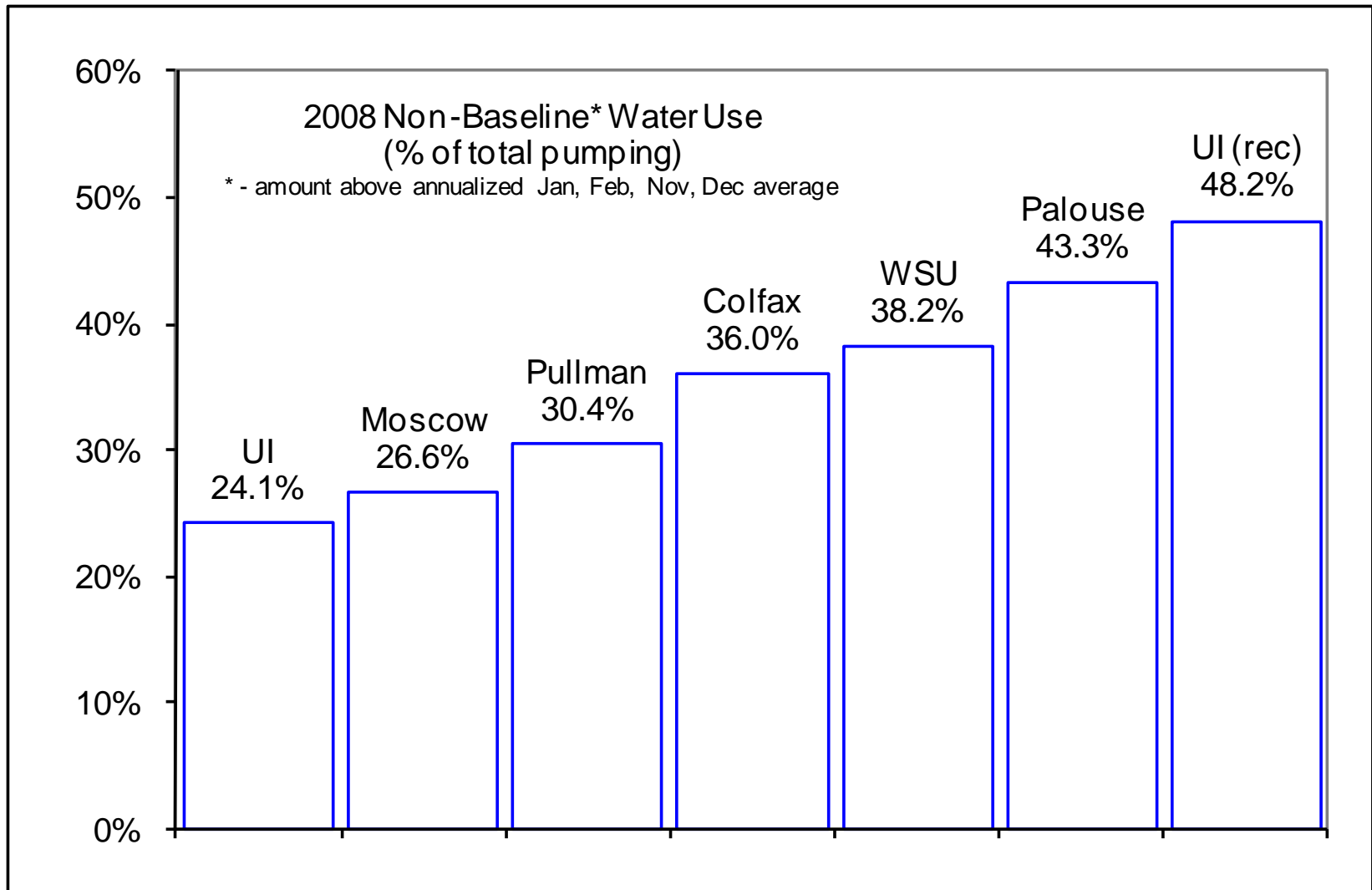
Seasonal Variation in Pumping

Non-Baseline Pumping

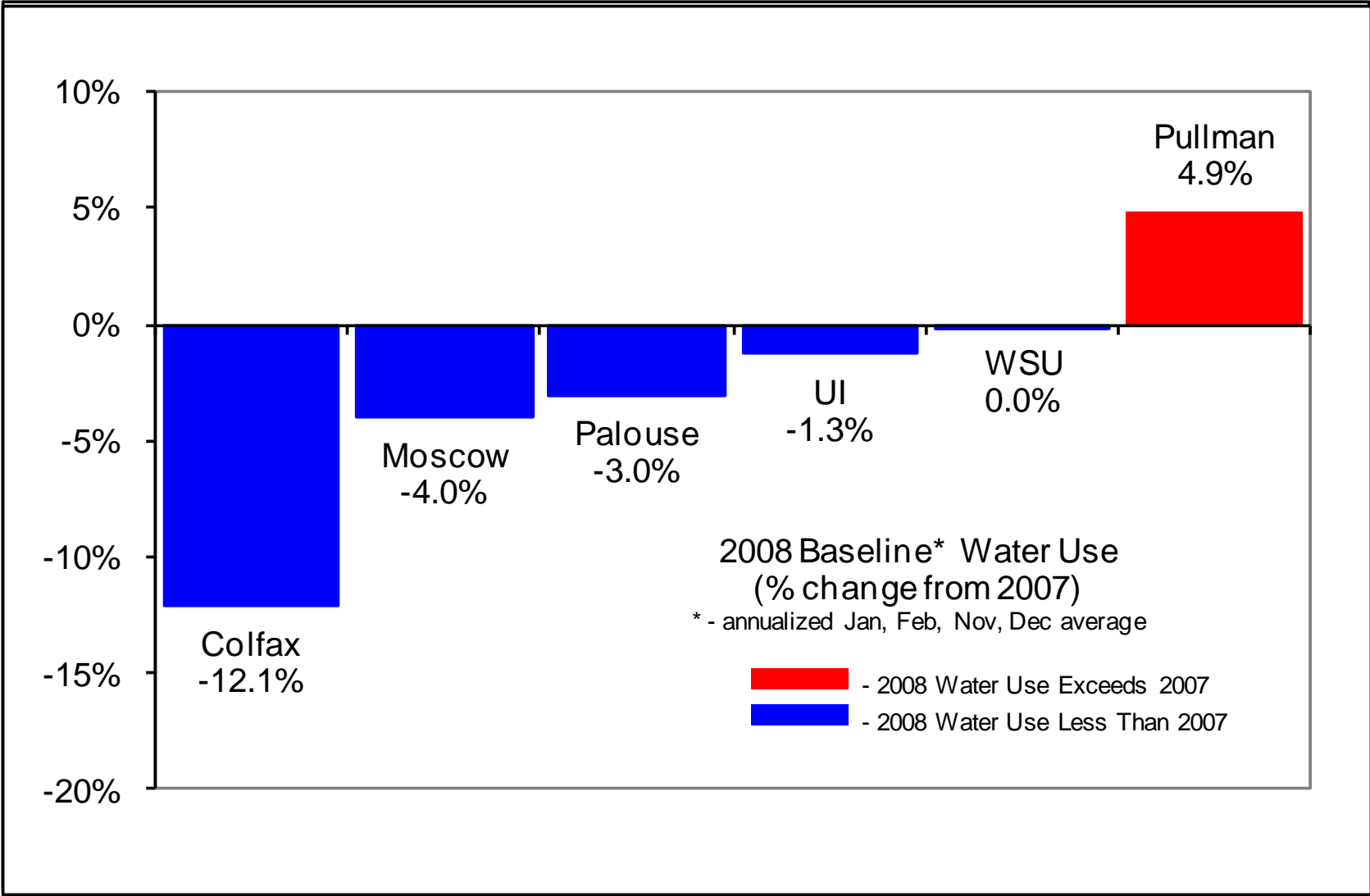


Baseline Pumping

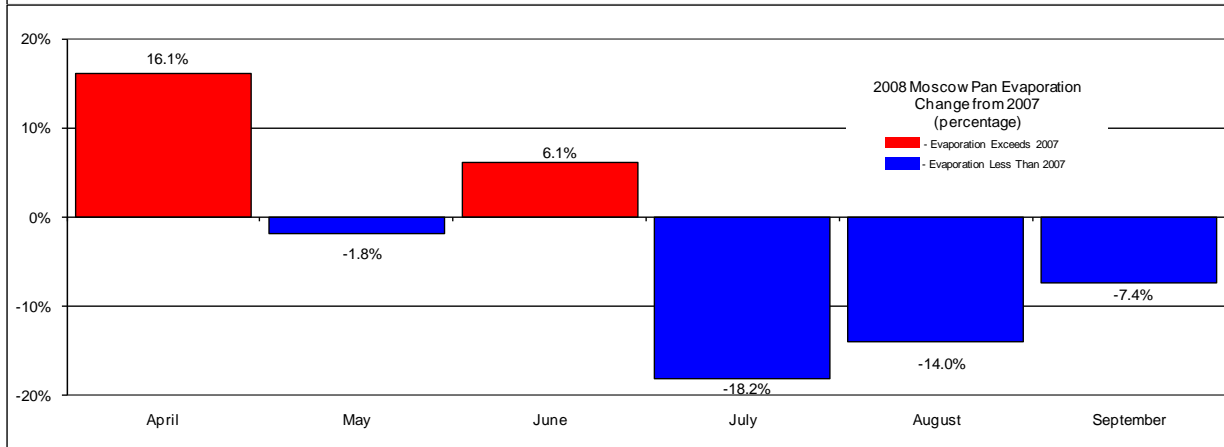
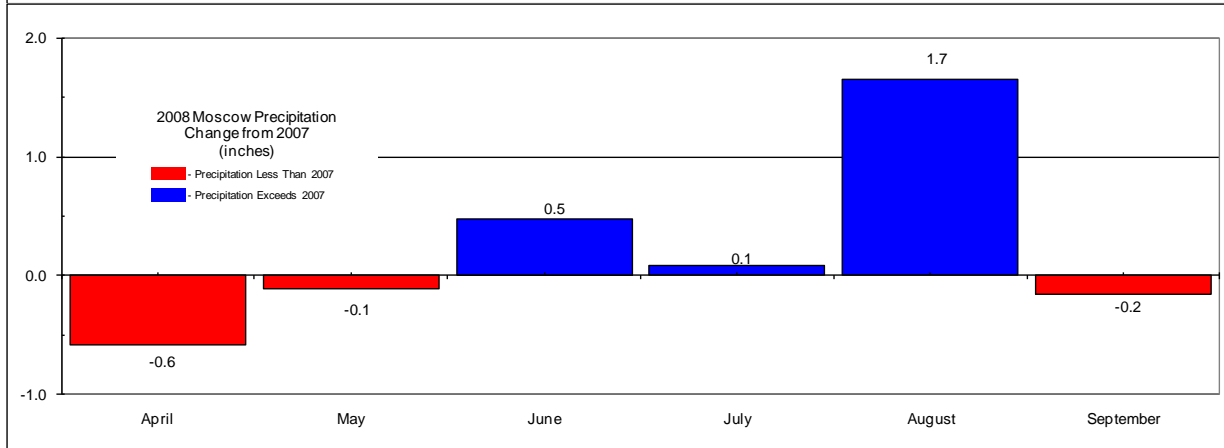
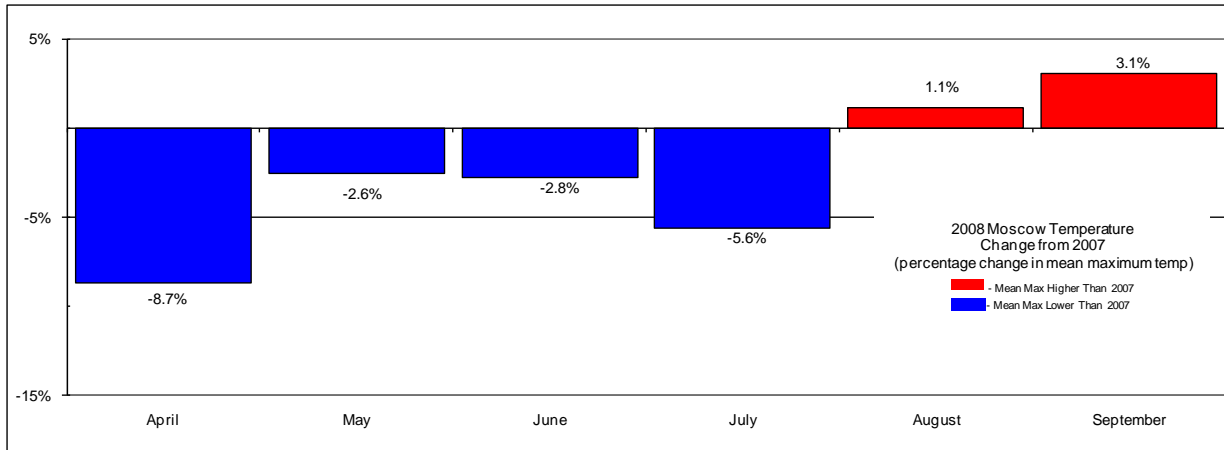
2008 Non-Baseline Pumping



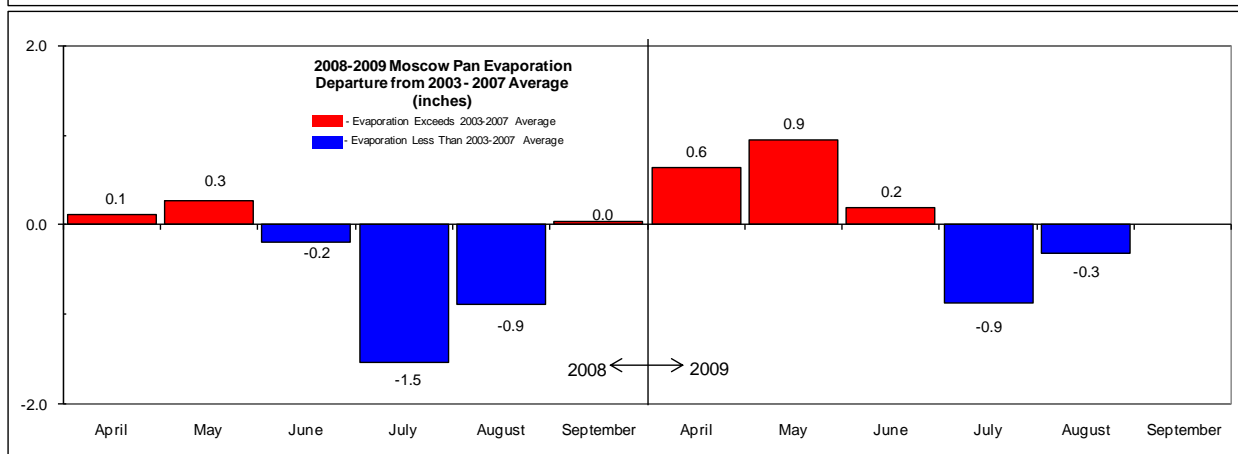
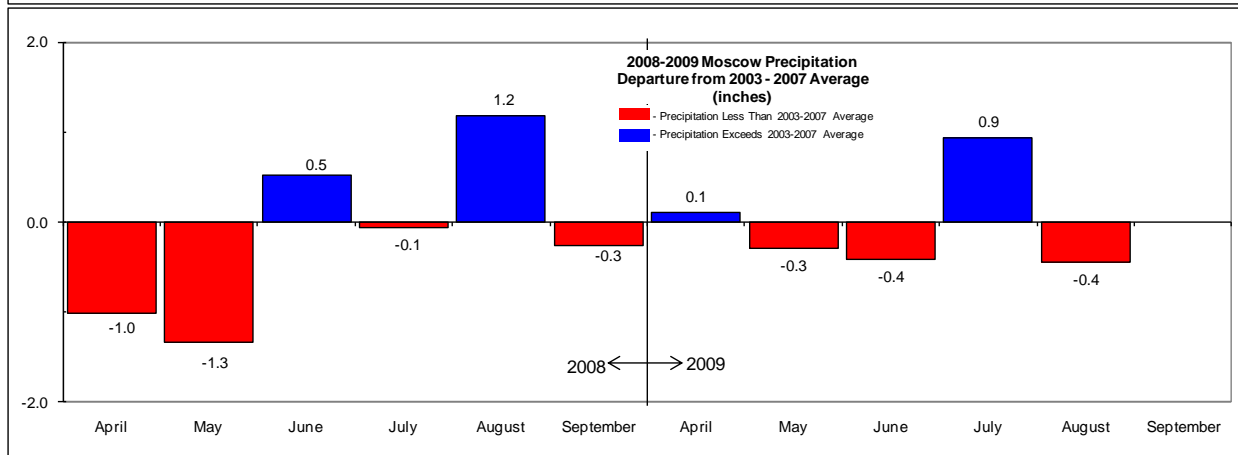
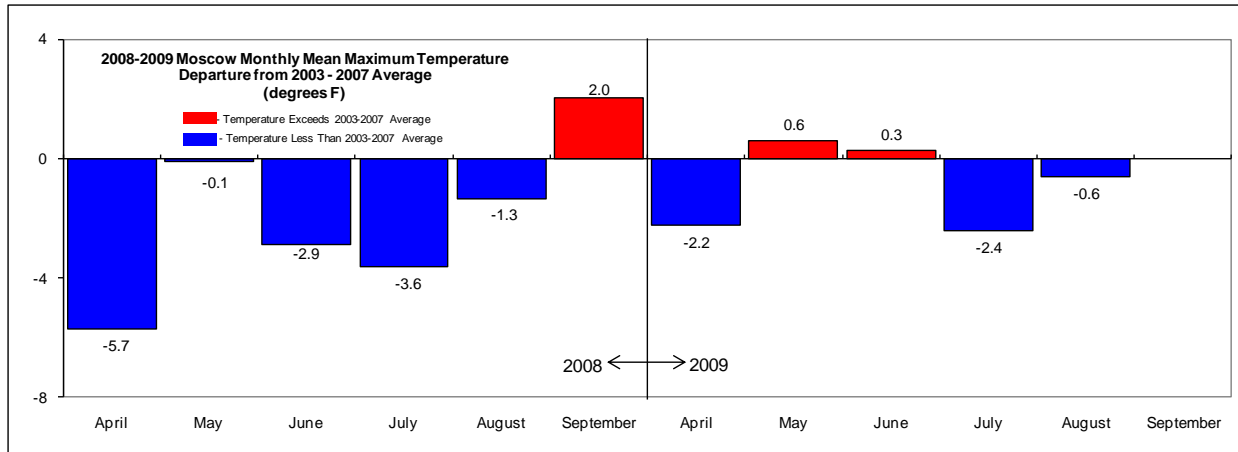
2008 vs. 2007 Pumping



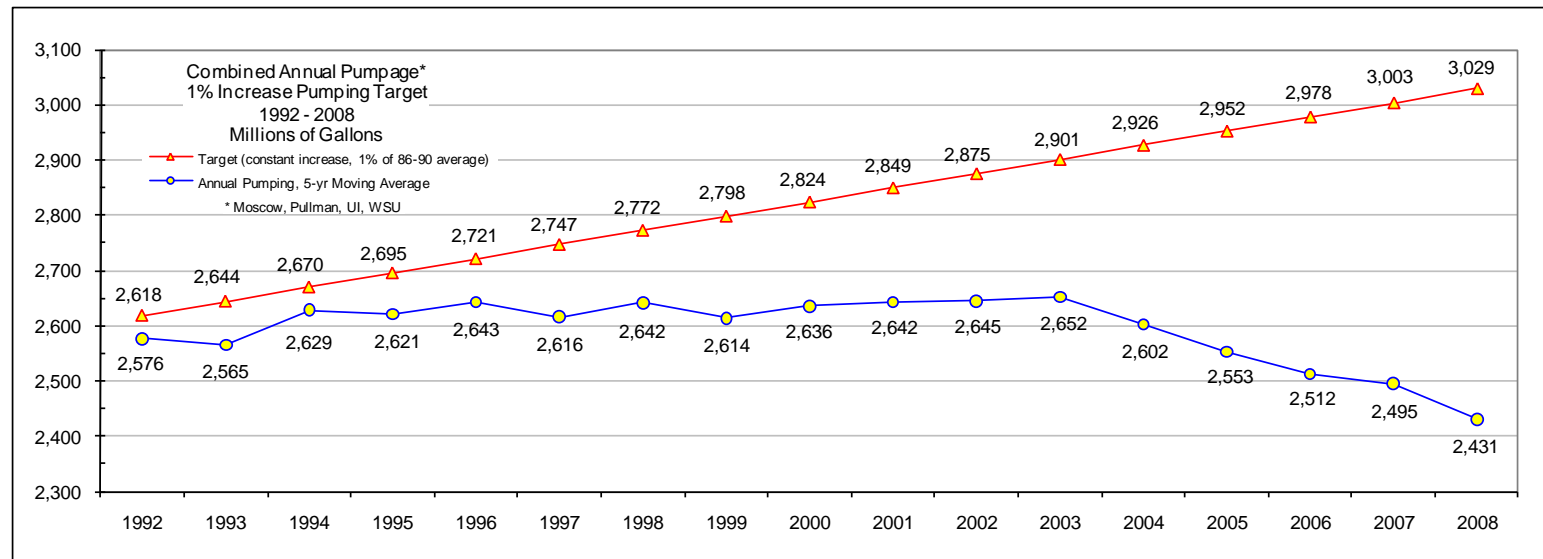
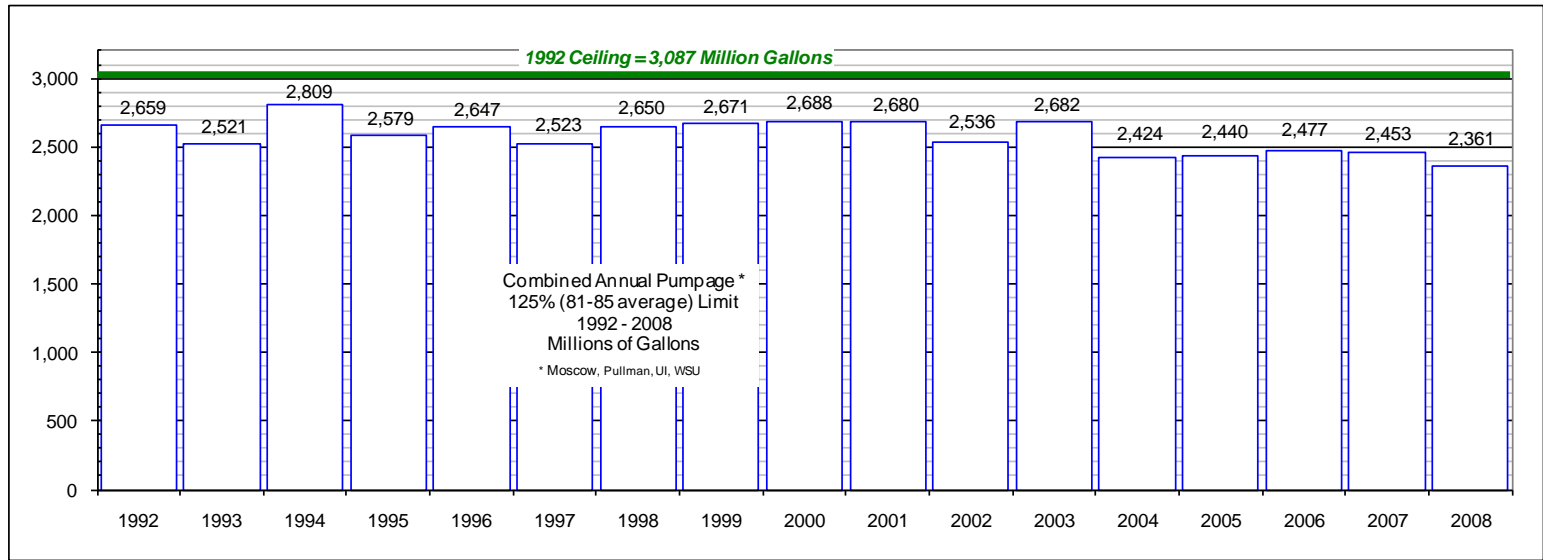
2008 vs. 2007 Weather



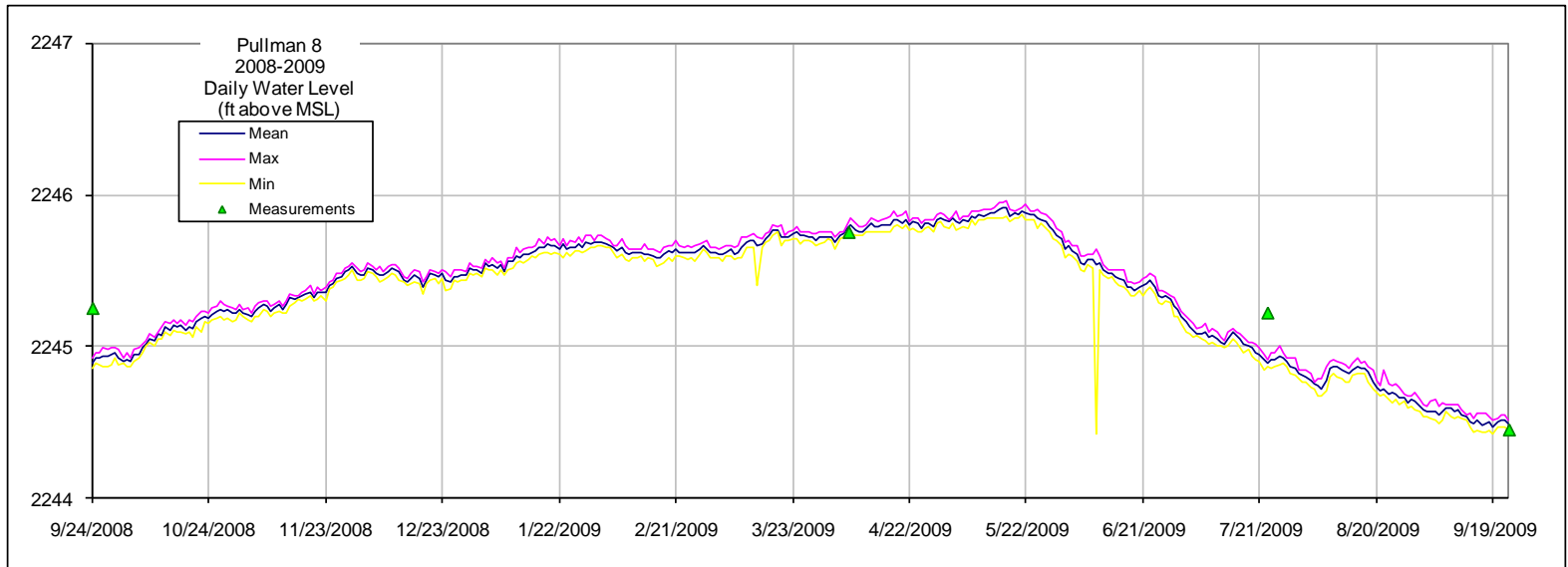
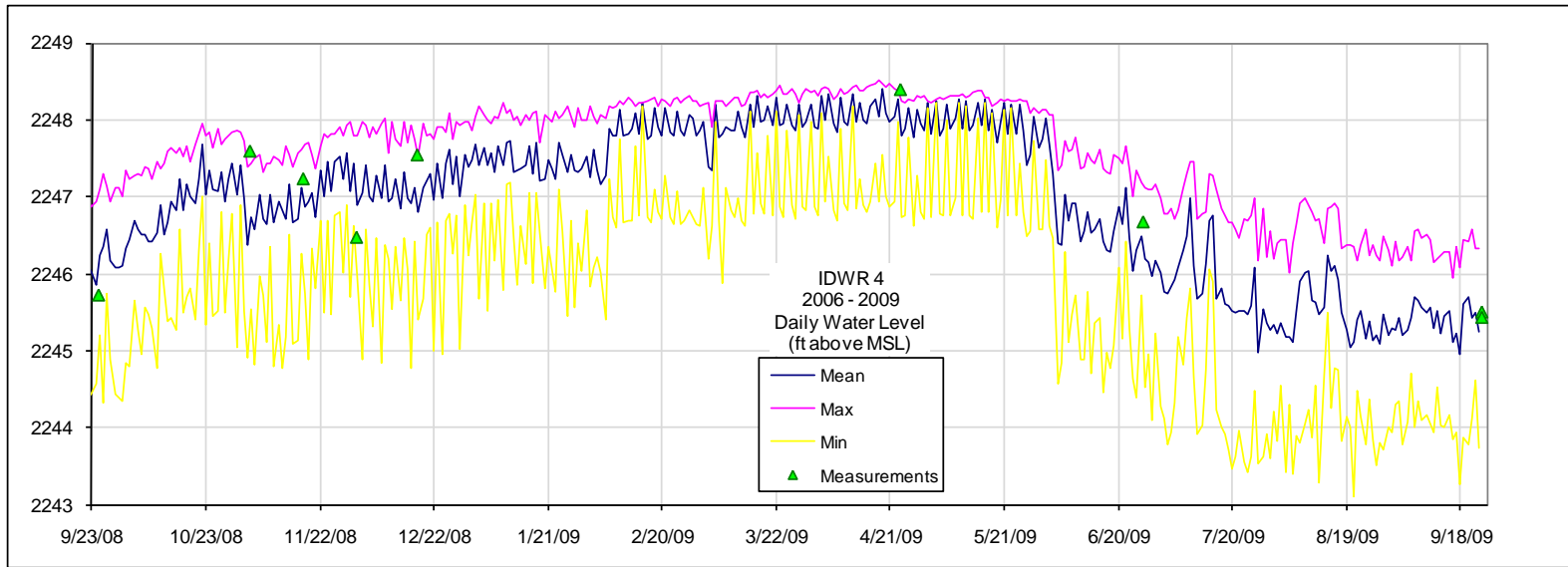
2008-2009 Weather vs. 2003-2007 Average



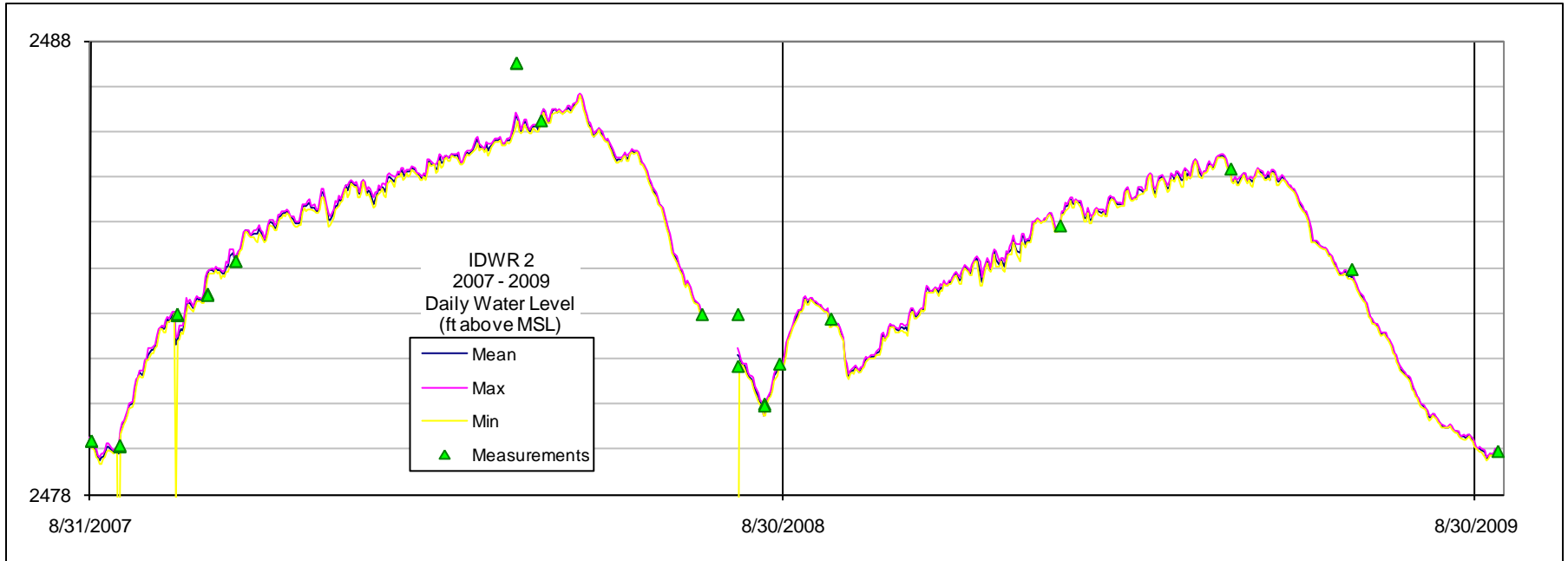
Voluntary Pumping Targets 1992-2008



Grande Ronde Water Levels



Wanapum Water Levels



Projects

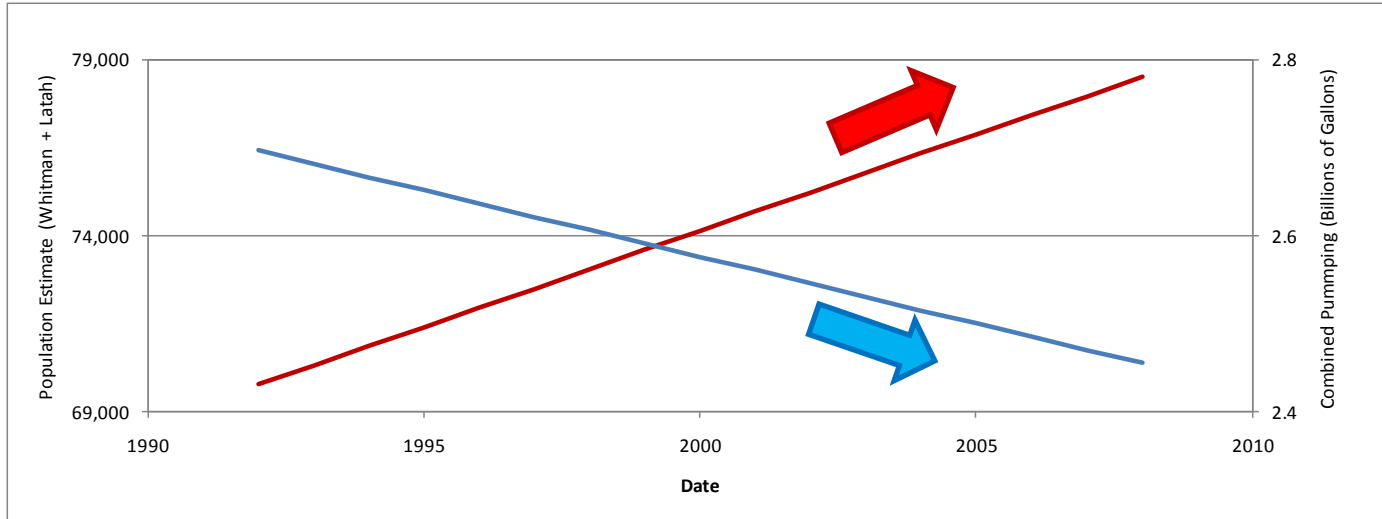
- Shallow and Deep Aquifer Testing
- System Dynamics Water Balance Model
- Tritium Testing
- Framework

Surface Water

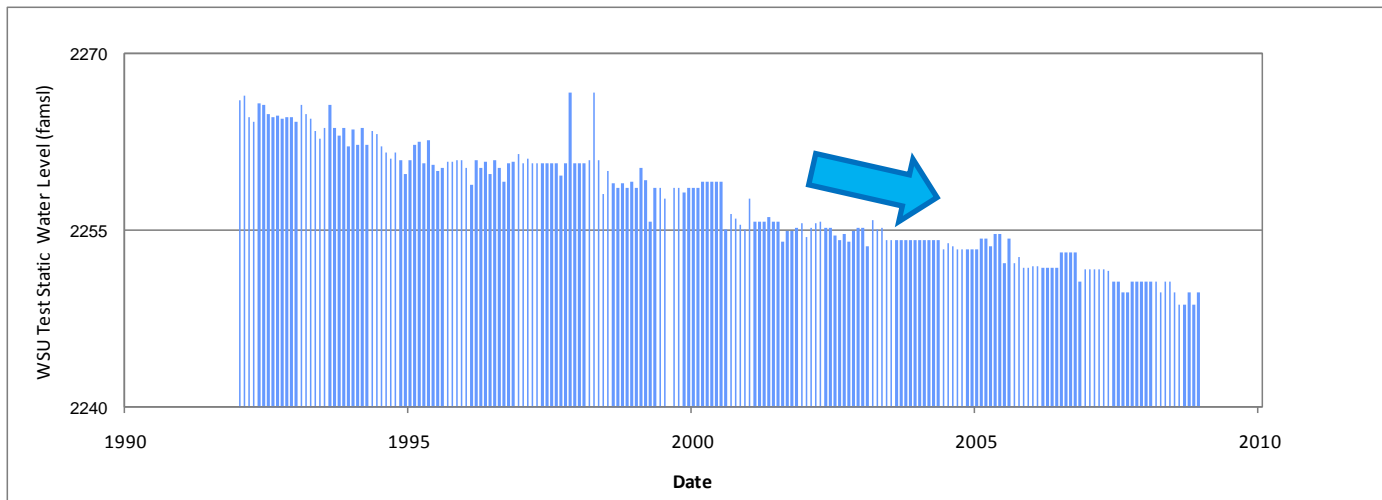


Ground Water

Trends (1992 – 2008)

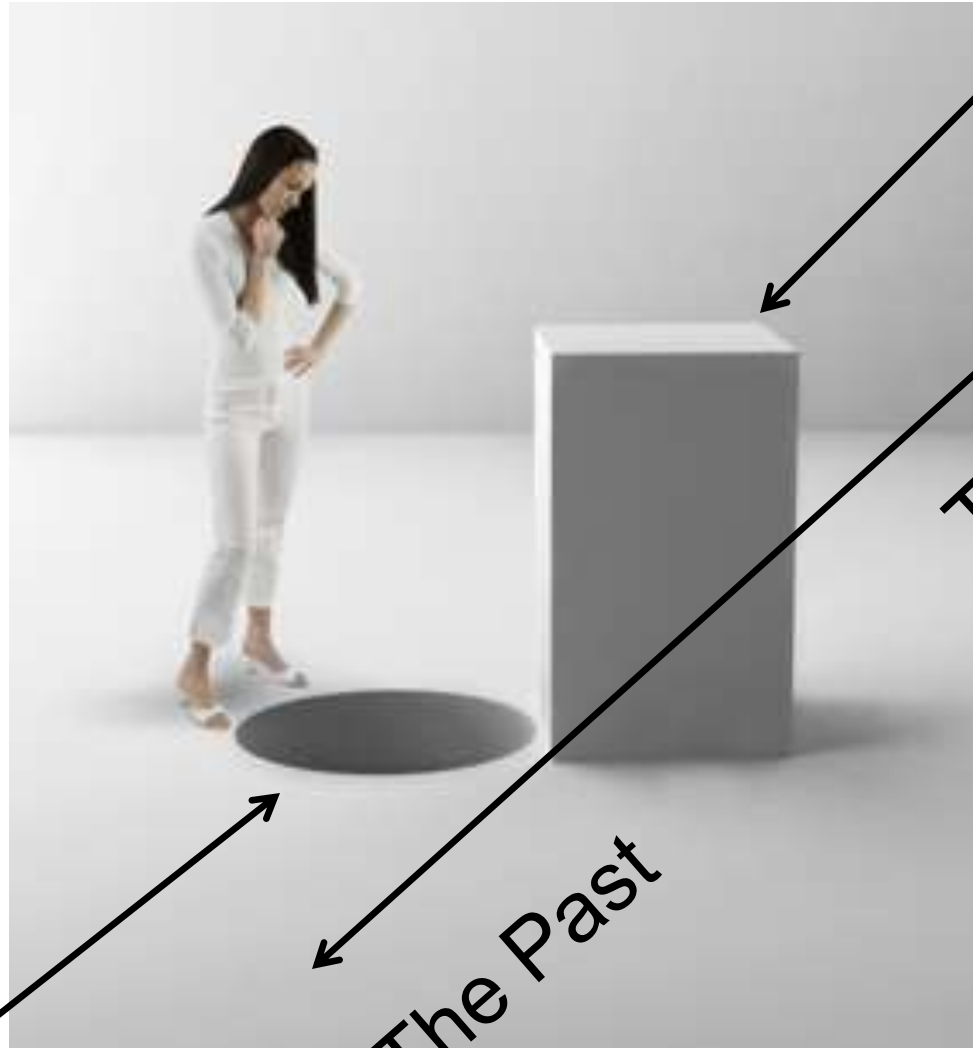


Population  Pumping  Water Levels 



Future Trends

Surface Water



The Future

The Past

Ground Water

PBAC Mission (2006)

To ensure a long-term,
quality water supply
for the Palouse Basin
region

Thanks!